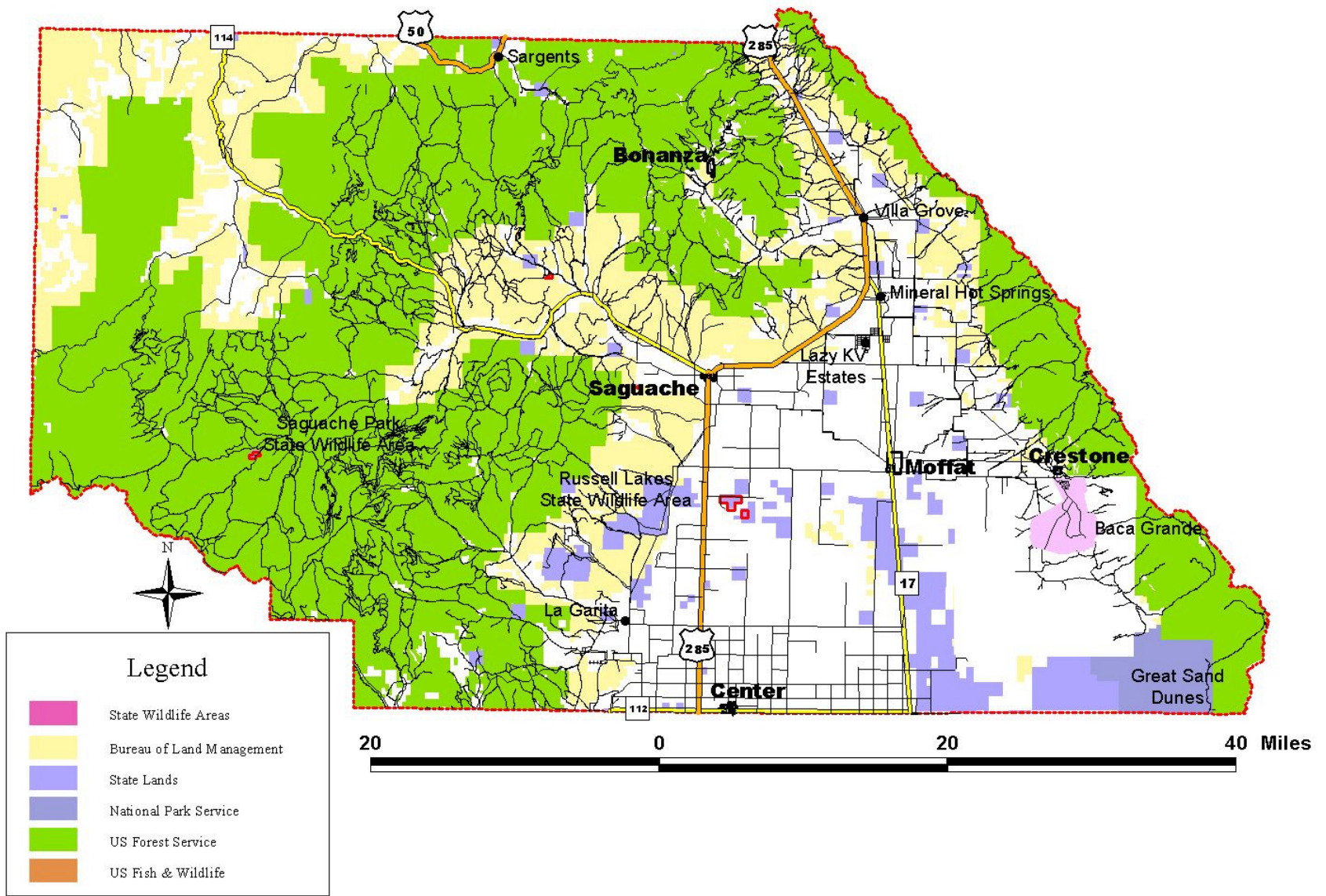


# Map 27

## Saguache County



Source: San Luis Valley GIS/GPS Authority.

## Saguache County

County Input on Goals and Objectives	Potential DRG assistance
<b>Agribusiness</b>	
<b>Goal: Create or retain higher paying jobs within the agribusiness sector by adding value and developing new products and markets.</b>	
<b>Objective:</b> Expand opportunities for value-added processing.	<b>FS, RLF</b>
<b>Objective:</b> Expand opportunities for new markets, niche markets, and new products through offering training, networking, upgrading telecommunications and exploring cooperative transportation arrangements.	<b>FS</b>
<b>Objective:</b> Identify opportunities for aquaculture and hydroponics.	<b>TA</b>
<b>Objective:</b> Educate youth on the value of the agriculture sector and practices.	<b>GS</b>
<b>Non-Ag Industry Sectors</b>	
<b>Goal: Create or retain higher paying jobs in the non-ag sectors by upgrading skills, applying new technologies, closing sales gaps, supporting new products and marketing methods, and replacing mine and sawmill closures with new industries.</b>	
<b>Objective:</b> Develop small business and cooperative enterprises that sustainably use and add value to local residents.	<b>TA</b>
<u>Strategy:</u> Maintain a Saguache County Business and Community Guide.	<b>DR</b>
<u>Strategy:</u> Continue to implement the ScSEED Strategic Plan.	<b>GS</b>
<b>Objective:</b> Develop light industry around the airport.	<b>GS</b>
<u>Strategy:</u> Develop AWS.	<b>GS</b>
<u>Strategy:</u> Improve runway and other infrastructure.	<b>GS</b>
<u>Strategy:</u> Encourage ancillary business development around the airport.	<b>GS</b>
<b>Objective:</b> Develop technology-based businesses in the county.	<b>RLF, OA</b>
<u>Strategy:</u> Push for Bean Pole funding	<b>TA</b>
<u>Strategy:</u> Encourage telecommuters re-locating to the county.	<b>GS</b>
<u>Strategy:</u> Offer more ways for citizens to access the internet.	<b>GS</b>
<u>Strategy:</u> Push the Public Utilities Commission to update phone company requirements.	<b>TA</b>
<b>Objective:</b> Increase potential for entrepreneurial opportunities.	<b>RLF</b>
<b>Objective:</b> Strengthen Chambers of Commerce and Merchant Associations' capacities to complete economic development projects.	<b>GS</b>
<b>Objective:</b> Develop Buy Local Campaign.	<b>GS</b>
<u>Strategy:</u> Form the necessary alliances, share ideas, and use the internet.	<b>GS</b>

## Saguache County (Continued)

County Input on Goals and Objectives	Potential DRG assistance
<p><b>Objective:</b> Build and develop more efficient transportation systems for goods and services export.</p> <p style="padding-left: 40px;"><u>Strategy:</u> Develop a shuttle system and/or explore cooperative trucking agreements.</p>	<p>TA</p> <p>GS</p>
<p><b>Objective:</b> Implement flexible scheduling and shared labor pool programs for small businesses.</p> <p style="padding-left: 40px;"><u>Strategy:</u> Develop a "bank" of employees that can be shared across businesses to create more year-round jobs.</p> <p style="padding-left: 40px;"><u>Strategy:</u> Develop a "bank" of legal advisors, accountants, and benefit packages that small businesses could share and collectively access to reduce costs.</p>	<p>TA</p> <p>TA</p> <p>TA</p>
<p><b>Objective:</b> Improve skills of the labor pool by bringing a remote campus to the county (e.g. Colorado Mountain College).</p>	<p>DR</p>
<p><b>Tourism</b></p>	
<p><b>Goal: Capture a greater share of tourism market potentials and jobs by identifying new markets, improving services and infrastructure, and enhancing tourist attractions and amenities.</b></p>	
<p><b>Objective:</b> Expand agriculture-, nature- and eco-based tourism opportunities and employment.</p>	<p>TA</p>
<p><b>Objective:</b> Improve roadside attractions, and lodging and restroom facilities.</p>	<p>TA</p>
<p><b>Objective:</b> Improve marketing of tourism in the county.</p>	<p>TA</p>
<p><b>Objective:</b> Implement more festivals, celebrations and community events.</p>	<p>GS</p>
<p><b>Business Recruitment</b></p>	
<p><b>Goal: Recruit new businesses and industries to diversify the Valley's economic base, create higher paying jobs and skills, and enhance other community goals and strategies.</b></p>	
<p><b>Objective:</b> Develop more niche markets and products through training, upgrading telecommunications, and exploring cooperative transportation arrangements.</p>	<p>OA</p>
<p><b>Infrastructure</b></p>	
<p><b>Goal: Assist with physical infrastructure improvements to support economic and community development, improve system quality and capacity, and ensure that future needs are met.</b></p>	
<p><b>Objective:</b> Improve roadsides.</p>	<p>GS</p>
<p><b>Objective:</b> Offers more ways for citizens to access the internet.</p>	<p>GS</p>
<p><b>Objective:</b> Participate in regional transportation planning to ensure transportation needs are being addressed and priorities selected support community plans.</p>	<p>TA</p>
<p><b>Objective:</b> Complete County Comprehensive Plan.</p>	<p>DR</p>
<p><b>Objective:</b> Identify needs and sources of support for upgrading telecommunications infrastructure.</p>	<p>GS</p>

## Saguache County (Continued)

County Input on Goals and Objectives	Potential DRG assistance
<b>Capacity Building and Communications</b>	
<b>Goal: Increase the capacity of local governments and county-based development groups to plan for desired futures, and improve the level of communications and cooperation among and between them.</b>	
<b>Objective:</b> Encourage the communities and people of Saguache County to work together for mutual benefit.	<b>GS</b>
<u>Strategy:</u> Continue to implement the ScSEED Strategic Plan.	<b>GS</b>
<u>Strategy:</u> Continue to grow the ScSEED organization as a countywide entity that can promote projects and oversee progress toward the community's vision.	<b>GS</b>
<u>Strategy:</u> Initiate fund raising and "fun raising" events, such as community dances and potluck dinners to provide support for ScSEED projects.	<b>GS</b>
<b>Community Services and Facilities</b>	
<b>Goal: Improve the quality of life and capacity of the Valley for future development by upgrading and expanding a wide range of community services, facilities, and amenities.</b>	
<b>Objective:</b> Increase life-long health care, educational, vocational, recreational and social opportunities.	<b>GS</b>
<b>Objective:</b> Support efforts to improve the availability, accessibility, and affordability of health care services.	<b>GS</b>
<u>Strategy:</u> Ensure priority services are available in all communities in the county including EMS.	<b>GS</b>
<u>Strategy:</u> Improve dental care in the SLV and the county.	<b>GS</b>
<u>Strategy:</u> Develop a countywide health plan that would ensure that all communities in the county have some level of care through expansion of facilities, equipment upgrades, sharing resources and/or development new services.	<b>GS</b>
<b>Objective:</b> Support efforts to improve availability of affordable housing.	<b>GS</b>
<b>Objective:</b> Support efforts to improve the quality of education.	<b>GS</b>
<b>Objective:</b> Increase pay equity for educators.	<b>GS</b>
<b>Objective:</b> Support efforts to preserve the county's historic and cultural heritage.	<b>TA</b>
<b>Objective:</b> Support efforts to develop recreational and community facilities (e.g. bike trails).	<b>GS</b>
<b>Objective:</b> Improve, start or expand services for teens and seniors.	<b>GS</b>
<b>Objective:</b> Improve public buildings in the county through renovation and restoration such as the County Courthouse, and museum.	<b>OA</b>

## Saguache County (Continued)

County Input on Goals and Objectives	Potential DRG assistance
<b>Natural Resources and Environment</b>	
<b>Goal: Protect and enhance environmental assets; assist conservation groups in maintaining the resource base; and support sustainable and environmentally sound management practices and use of natural resources.</b>	
<b>Objective:</b> Preserve and protect community character and the environmental health of the county.	<b>GS</b>
<u>Strategy:</u> Work with the Saguache County Planning Commission to educate county residents about land use, growth issues and compatible development. Contribute to policies and initiatives that preserve locally quality of life and health of the environment.	<b>GS</b>
<u>Strategy:</u> Continue to implement the ScSEED Strategic Plan.	<b>GS</b>
<b>Objective:</b> Support sustainable levels of land use and natural resources, and the management practices needed to ensure their protection for current and future generations.	<b>GS</b>
<b>Objective:</b> Support measures to conserve water, prevent permanent loss due to over-appropriation, and protect against exportation.	<b>TA</b>
<b>Objective:</b> Maintain open space through tools such as easements.	<b>GS</b>