

---

## **ACKNOWLEDGEMENTS**

---

### **Principal Researcher and Author**

#### **John S. Stump**

Director of Research & Planning  
San Luis Valley Development Resources Group

### **Contributing Authors**

**Roni K. Wisdom, Chief Financial Officer**  
San Luis Valley Development Resources Group  
*Financial Resources and Economic Development Programs*

**Diana Laughlin, PhD**  
Colorado Department of Local Affairs/Colorado State  
University Extension, Pueblo  
*Utilities and Safety*

**Claire Stuebe, MA, Evaluation Coordinator**  
Rocky Mountain Prevention Research Center  
*Health Services*

**Barbara Irwin, Facilities and Resources Mgmt.**  
Great Sand Dunes National Park & Preserve  
*Land Management Agencies*

**J. Gary Brown, Executive Director**  
San Luis Valley Rural Health Network  
*Health Services*

**Otis Hager, Communications Specialist**  
Adams State College Computing Services  
*Telecommunications*

### **Colorado State Government**

**Jim Westkott, Research Analyst**  
Colorado Department of Local Affairs/Demography  
Office  
*Population, Labor Force, Economic Base Analysis*

**Stephanie Steffens, Business Development Rep.**  
Colorado Office of Economic Development &  
International Trade  
*Development Priorities*

### **Project Assistance**

**Robert E. Houghton, Research Assistant**  
Adams State College Intern Program  
*Tables and Layout*

**Kaitlyn Mincey, Student Volunteer**  
Alamosa High School, Sophomore Class  
*Document Preparation*

---

## **SAN LUIS VALLEY DEVELOPMENT RESOURCES GROUP**

---

### **Executive Board**

**Patricia Fluck, Chairman**  
The Wolf Creek Team, President

**David E. Broyles, Vice-Chairman**  
First Southwest Bank, President

**Rudy Gonzales, Secretary/Treasurer**

**April Gonzales**  
City of Alamosa, Councilor

**Robert Hagedorn**  
Rio Grande County, Commissioner

**Bill Mansheim**  
Adams State College, Chief Finance Officer

**John Sandoval**  
Conejos County, Chairman

**Mike Spearman**  
Saguache County, Chairman

**George Wilkinson**  
Alamosa County, Chairman

**Kathy Worthington**  
Xcel Energy, Service Manager

### **Staff**

**Michael D. Wisdom, Executive Director**

**John S. Stump, Director of Research & Planning**

**Roni K. Wisdom, Chief Financial Officer**

**Karen Studer, Office Manager**

**San Luis Valley Development Resources Group / San Luis Valley Economic  
Development District**

---

**A resolution adopting the 2007 Comprehensive Economic Development Strategy.**

---

**WHEREAS**, Economic Development Districts have been established by the U.S. Department of Commerce, Economic Development Administration (EDA) for the purpose of planning and implementing economic and community development programs; and

**WHEREAS**, a San Luis Valley Economic Development District (District) has been designated for the six-county region including Alamosa, Conejos, Costilla, Mineral, Rio Grande, and Saguache counties; and

**WHEREAS**, the San Luis Valley Development Resources Group (SLVDRG) maintains District membership requirements, receives annual Planning Grants, and carries our responsibilities for the District in accordance with EDA guidelines; and

**WHEREAS**, Districts are required to conduct and maintain a Comprehensive Economic Development Strategy (CEDS) planning process and CEDS document as part of their planning responsibilities; and

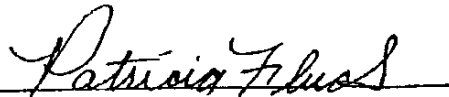
**WHEREAS**, guidelines require a CEDS Strategy Committee to be established for this purpose which has been delegated to the Executive Board of the SLVDRG consisting of the Chairman, Vice-Chairman, Secretary-Treasurer, and seven more SLVDRG representatives; and

**WHEREAS**, the CEDS Committee has completed the planning process and has established economic development priorities in a Regional Action Plan for the District; and


**WHEREAS**, responsibility for preparing the CEDS document containing the Regional Action Plan, analysis, and other elements has been assigned to the SLVDRG staff; and

**WHEREAS**, the contents of the completed document have been reviewed by the 2007 CEDS Strategy Committee.

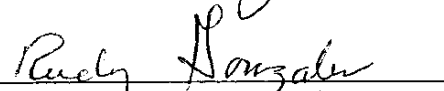
**NOW, THEREFORE, BE IT RESOLVED:** The Executive Board and CEDS Strategy Committee of the San Luis Valley Development Resources Group hereby approves and adopts this document as the 2007 Comprehensive Economic Development Strategy for the San Luis Valley Development District as duly authorized by the following individuals:

  
Patricia Fluck, Chairman

1-29-08  
Date

  
David Broyles, Vice Chairman

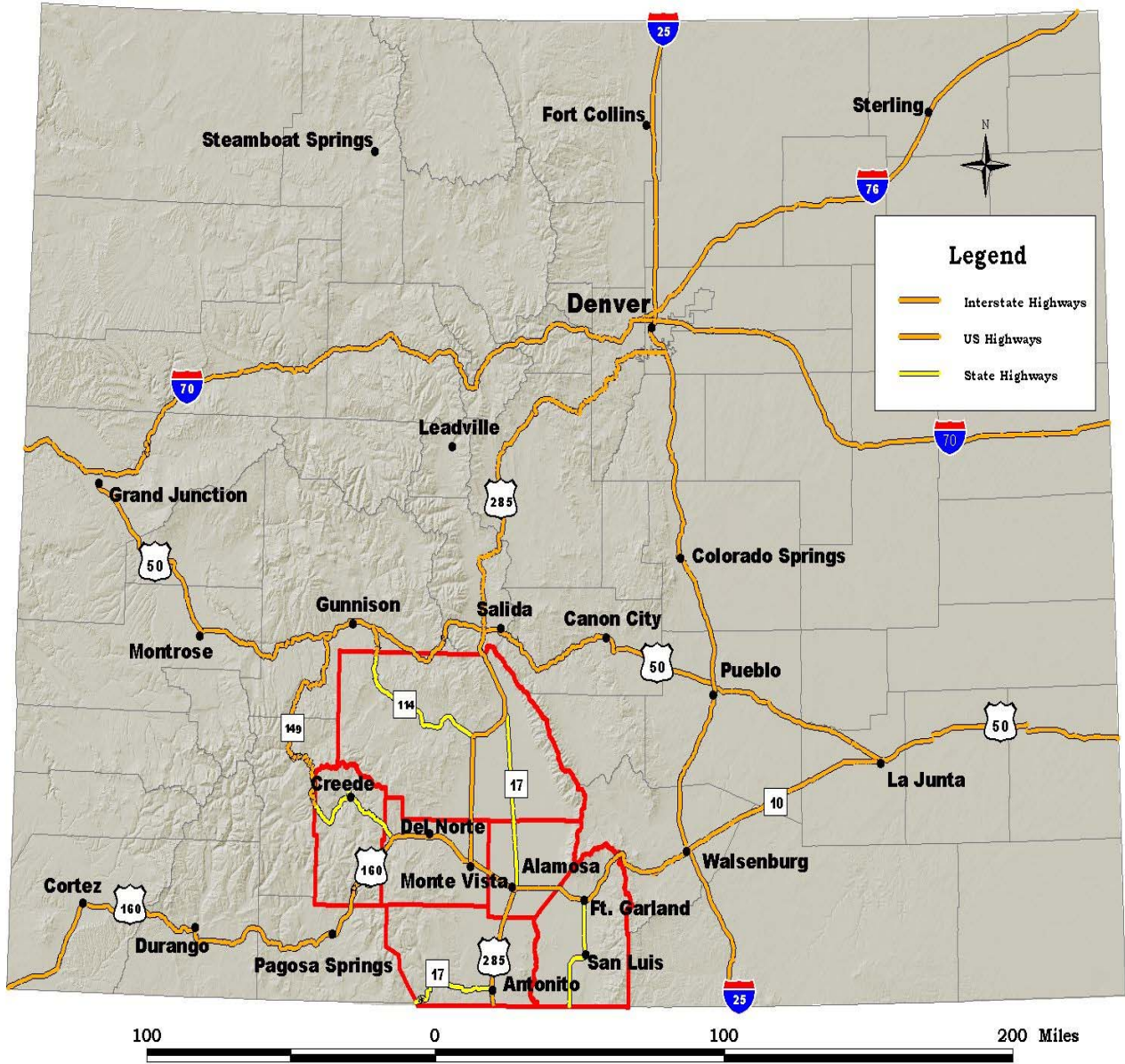
1/28/08  
Date

  
Rudy Gonzales, Secretary/Treasurer

01-28-08  
Date

# Map 1

## Colorado and San Luis Valley Region



Source: San Luis Valley GIS/GPS Authority.